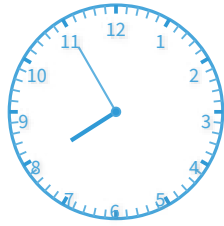




#1

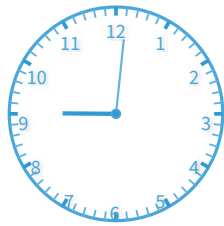
What time does the clock show?

☐ 9:56☐ 7:55☐ 9:30☐ 9:51

Show your work

#2

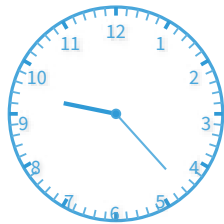
What time does the clock show?

☐ 10:17☐ 8:07☐ 9:01☐ 6:40

Show your work

#3

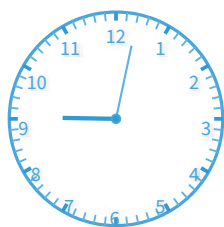
What time does the clock show?

☐ 9:23☐ 11:28☐ 9:57☐ 11:52

Show your work

#4

What time does the clock show?



☐ 11:42

☐ 7:12

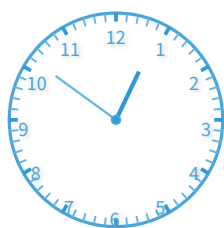
☐ 9:02

☐ 10:08

Show your work

#5

What time does the clock show?



☐ 12:51

☐ 11:42

☐ 9:12

☐ 11:52

Show your work

#6

What time does the clock show? Answer using digits and a colon (for example: 10:46).

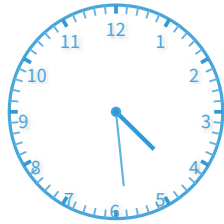


Show your work



#7

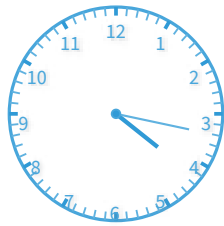
What time does the clock show?

☐ 3:58☐ 4:29☐ 5:17☐ 5:47

Show your work

#8

What time does the clock show?

☐ 4:28☐ 4:17☐ 4:46☐ 5:24

Show your work

#9

What time does the clock show? Answer using digits and a colon (for example: 10:46).

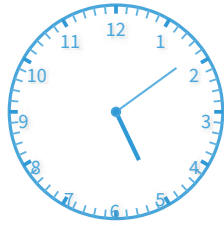


Show your work



#10

What time does the clock show?

☐ 4:19☐ 5:09☐ 5:49☐ 4:40

Show your work

#11

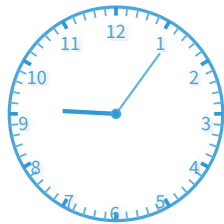
What time does the clock show? Answer using digits and a colon (for example: 10:46).



Show your work

#12

What time does the clock show?

☐ 10:01☐ 9:18☐ 7:33☐ 9:06

Show your work

Question	Answer
#1	choice 2
#2	choice 3
#3	choice 1
#4	choice 3
#5	choice 1
#6	7:02
#7	choice 2
#8	choice 2
#9	4:58
#10	choice 2
#11	7:27
#12	choice 4